

BI8208GM2G4F

14-Port Gigabit Industrial L2 Managed Switch

Datasheet



Key Features:

Ports: Provide 8*10/100/1000Mbps ports with 2*10/100/1000M RJ45 and 4*1.25Gbps SFP Uplink

Self-adaption: RJ45 port supports 10/100/1000Mbps Auto MDI/MDIX

Industrial Installation: Din Rail mounting installation

Wide Application: Designed for Railway, traffic etc some Industrial environment

Surge protection: Protect the device from lighting surges and others electrical hazards

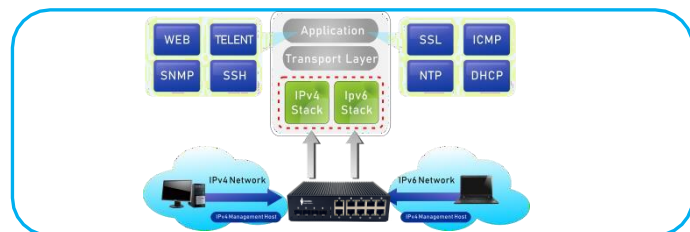
Managed: Support remote web managed,VLAN and storm control and IPV6 management etc.

Working Temperature: -40 to 85 degrees operating temperature

Considerate Design: IP40 Industrial design with dual power input

Environmentally Hardened Design

With the **IP40** metal industrial case which provides a high level of immunity against electromagnetic interference and heavy electrical surges,Being able to operate under the temperature range from **-40 to 85 degrees C**, the BI8208GM2G4F can be placed in almost any difficult environment.



Cost-effective IPv4/IPv6 Managed Gigabit Switch Solution

With layer 2+ managed Gigabit Switch, It provides IPv6/IPv4 management and built-in L2/L4 Gigabit Switching engine, and supports high-speed transmission of surveillance images and videos.

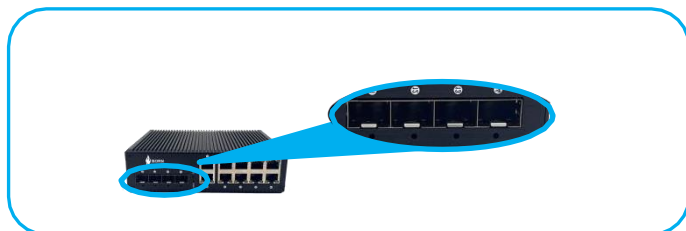
Surge Protection Design

provides contact discharge of $\pm 8\text{KV}$ DC and air discharge of $\pm 15\text{KV}$ DC for Ethernet ESD protection. It also supports $\pm 6\text{KV}$ surge immunity to improve product stability and protects users' networks from devastating ESD attacks, making sure the flow of operation does not fluctuate.



Gigabit SFP Uplink Port

With 4 SFP module slot available, the SFP uplink port is ideal for connecting the switch to the network's backbone, providing more than enough bandwidth and stability for ultra high speed data transferring, Beside the SFP can transmits the data with Max 100Km distance with more economic solution



Technical Datasheet

Technical Specifications		BI8208GM2G4F
10M/100M/1G RJ-45 copper ports		10
1G SFP+ ports		4
Console Port (For config)		Yes
Performance Specification		
CPU	Dual-Core 1GHz MIPS InterActive CPU subsystem	
Packet buffer memory (Dynamically shared across only used ports)		12 MB
Forwarding modes		Store-and-forward
Bandwidth		32 Gbps
Priority queues		8
MAC address database size (48-bit MAC addresses)		8K
Multicast groups		1K
Number of IPv4 static routes		32
Number of IPv6 static routes		32
Number of VLANs		4094
Number of VLANs(Open QinQ)		16,760,836(4094*4094)
Number of ARP cache entries		1024 ARP
Number of DHCP snooping bindings		512
Access Control Lists (ACLs)	100 shared for MAC, IP and IPv6 ACLs (ingress)	
Packet forwarding rate (64 byte packet size) (Mpps)		24.62
Jumbo frame support (bytes)		Up to 9K packet size
Mean Time Between Failures (MTBF) @ 25°C		142,312 hours
100M Copper Latency (64-byte; 1518-byte; 9216-byte frames)		8.314μs; 8.612μs; 8.451μs
1G Copper Latency (64-byte; 1518-byte; 9216-byte frames)		3.614μs; 3.545μs; 3.628μs
1G Fiber Latency (64-byte; 1518-byte; 9216-byte frames)		2.980μs; 3.101μs; 3.179μs
10G Fiber Latency (64-byte; 1518-byte; 9216-byte frames)		2.330μs; 2.561μs; 2.7129μs

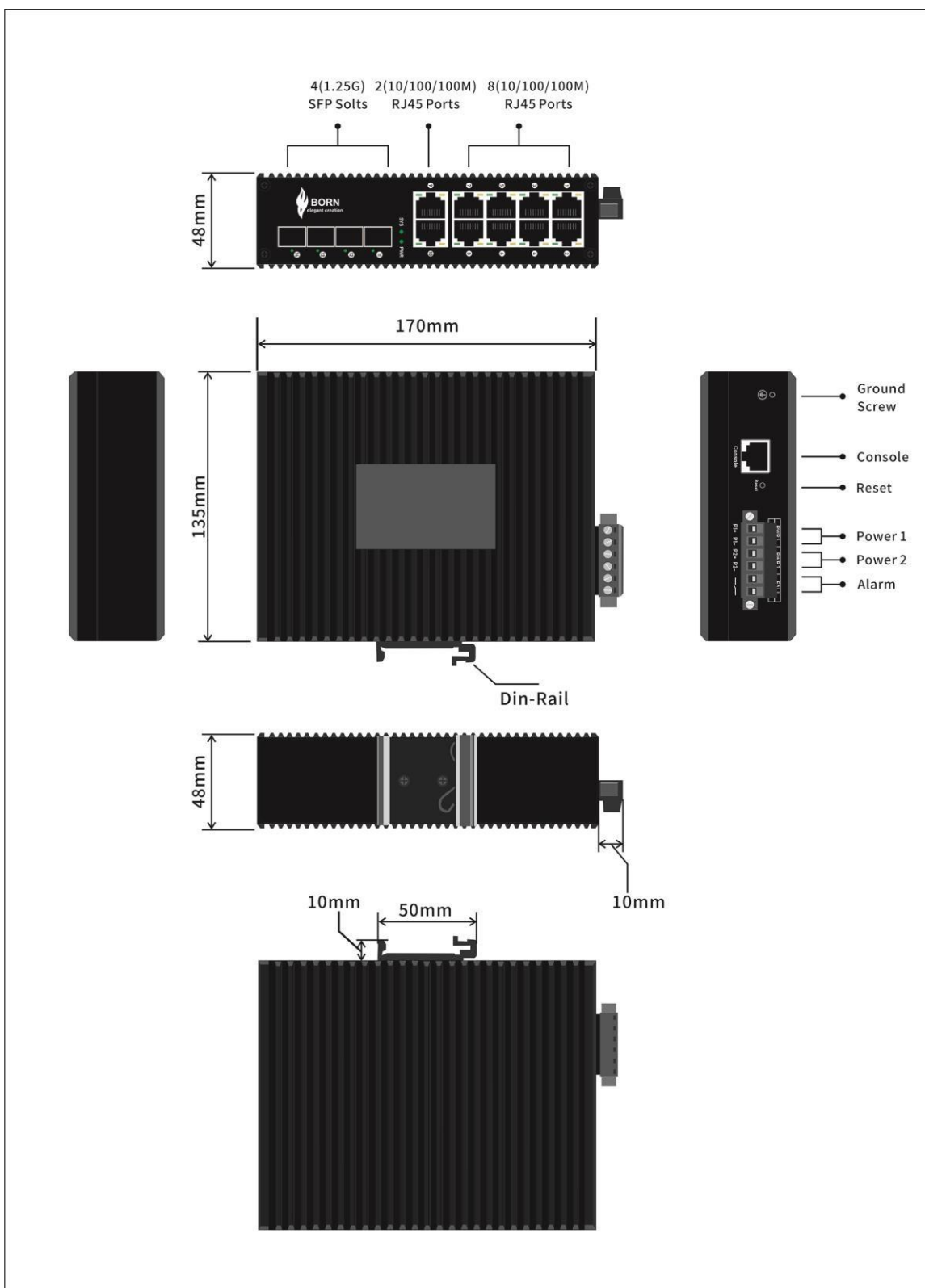
L2 Services - VLANs	BI8208GM2G4F
IEEE 802.1Q VLAN tagging	Yes
QinQ VLAN tagging	Yes
IP-based VLANs	Yes
MAC-based VLANs	Yes
Protocol-based VLAN	Yes
Voice VLAN	Yes
VLAN mapping	Yes
L2 Services - Availability	
Broadcast, multicast, unknown unicast storm control	Yes
IEEE 802.3ad - LAGs (LACP)	Yes
IEEE 802.3x (full duplex and flow control)	Yes
IEEE 802.1D Spanning Tree Protocol	Yes
IEEE 802.1w Rapid Spanning Tree Protocol	Yes
IEEE 802.1s Multiple Spanning Tree Protocol	Yes
ERPS,Complies with G.8032	Yes
L2 Services - Multicast Filtering	
IGMP snooping (v1, v2 and v3)	Yes
MLD snooping support (v1 and v2)	Yes
IGMP snooping querier (v2)	Yes
MLD snooping querier (v1)	Yes
Multicast VLAN Registration (MVR)	Yes
L3 Services - DHCP	
DHCP client	Yes
DHCP snooping	Yes
DHCP Server	Yes
L3 Services - Routing	
IPv4 static routing	Yes
IPv6 static routing	Yes

Link Aggregation		BI8208GM2G4F
IEEE 802.3ad - LAGs (LACP)		Yes
Manual LAG		Yes
# of LAGs / # of members in each LAG		26 LAGs with max 8 members in each LAG
Network Monitoring and Discovery		
Services		
802.1ab LLDP		Yes
SNMP		v1, v2,v3
RMON group 1,2,3,9		Yes
Network Security		
IEEE 802.1x		Yes
RADIUS accounting		Yes
Access Control Lists (ACLs)		Yes
IP-based ACLs (IPv4 and IPv6)		L2 / L3 / L4
MAC-based ACLs		Yes
TCP/UDP-based ACLs		Yes
Control MAC # static entries		48
Port-based security by locked MAC addresses		Yes
Dynamic ARP inspection		Yes
Quality of Service (QoS)		
Port-based rate limiting		Yes ingress and egress
Port-based QoS		Yes
Support for IPv6 fields		Yes
DiffServ QoS		Yes ingress
IEEE 802.1p COS		Yes
Destination MAC and IP		Yes
IPv4 and v6 DSCP		Yes
TCP/UDP-based		Yes
Weighted Round Robin (WRR)		Yes
Strict priority queue technology		Yes

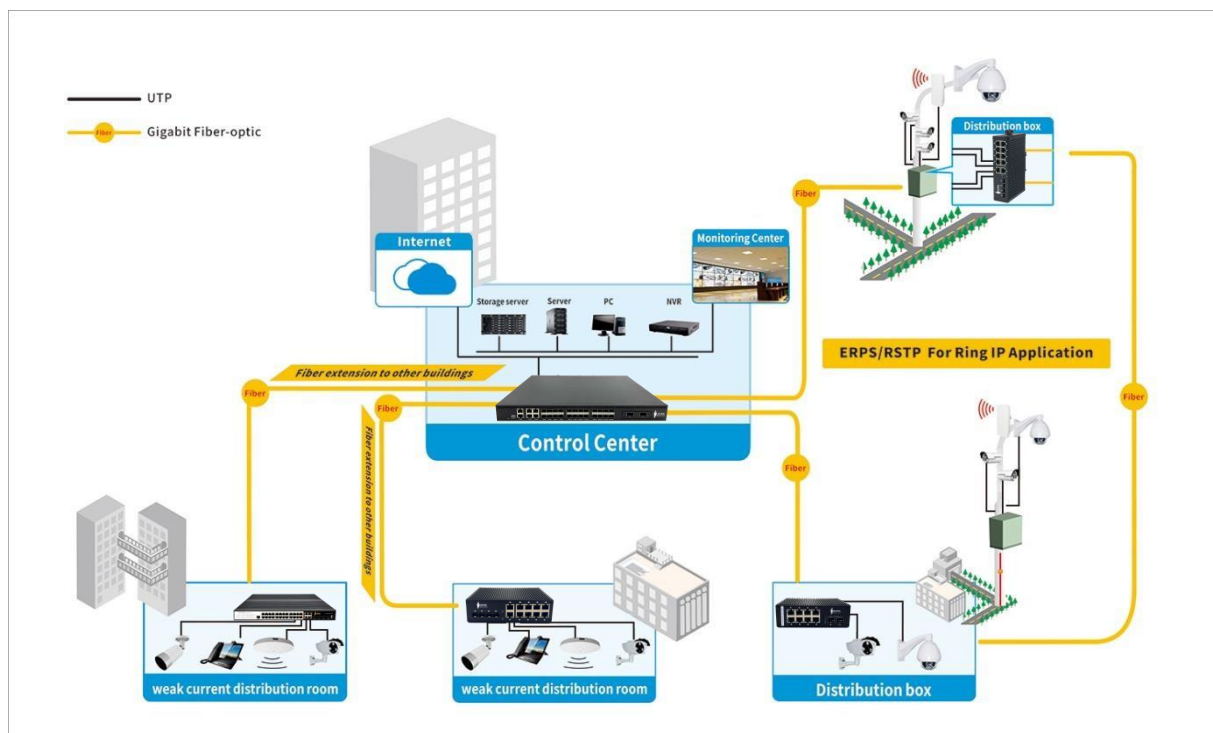
IEEE Network Protocols	BIQ8208GM2G4F
<ul style="list-style-type: none"> • IEEE 802.3 Ethernet • IEEE 802.3u 100BASE-T • IEEE 802.3ab 1000BASE-T • IEEE 802.3az Energy Efficient Ethernet (EEE) • IEEE 802.3ad Trunking (LACP) • IEEE 802.3z 1000BASE-SX/LX • IEEE 802.3x Full-Duplex Flow Control 	<ul style="list-style-type: none"> • IEEE 802.1Q VLAN Tagging • IEEE 802.1AB LLDP with ANSI/TIA-1057 (LLDP-MED) • IEEE 802.1p Class of Service • IEEE 802.1D Spanning Tree (STP) • IEEE 802.1s Multiple Spanning Tree (MSTP) • IEEE 802.1w Rapid Spanning Tree (RSTP) • IEEE 802.1x RADIUS Network Access Control
Management, Monitoring & Troubleshooting	
Password management	Yes
Admin access control via RADIUS and TACACS+	Yes
IPv6 management	Yes
SNMP v1/v2c	Yes
RMON group 1,2,3,9	Yes
Port mirroring	Yes ingress and egress
Many-to-one port mirroring	Yes
Cable test utility	Yes
TLS/HTTPS Web-based access (version)	Yes (v1.2)
File transfers (uploads, downloads)	TFTP / HTTP
HTTP upload/download (firmware)	Yes
Syslog (RFC 3164)	Yes
USB port for firmware and config upload/download	Yes
LEDs	Yes
Per port	Speed, Link, Activity;
Per device	Power, system
Physical Specifications	Yes
Dimensions	170 x 135 x 48 mm (6.69x 5.31 x 1.89 in)
Weight	0.8kg (1.76 lb)
Max power (worst case, all ports used, line-rate traffic) (Watts)	16W
Idle power consumption (all ports link-down standby) (Watts)	8W
Energy Efficient Ethernet (EEE) IEEE 802.3az	Yes (deactivated by default)
Fan	Fanless

Environmental Specifications		BI8208GM2G4F
Operating		
Operating Temperature		-40° to 85°C
Humidity		95% maximum relative humidity (RH), non-condensing
Altitude		10,000 ft (3,000 m) maximum
Storage		
Storage Temperature		-40° to 85°C
Humidity (relative)		95% maximum relative humidity, non-condensing
Altitude		10,000 ft (3,000 m) maximum
Electromagnetic Emissions and Immunity		
Certifications		CE mark, commercial
		FCC Part 15 Class A, VCCI Class A
		Class A EN 55022 (CISPR 22) Class A
		Class A C-Tick
		EN 55024
		CCC
		47 CFR FCC Part 15, SubpartB, Class A ICES-003: 2016 Issue 6, Class A
		ANSI C63.4:2014
		IEC 60950-1:2005 (ed.2)+A1:2009+A2:2013 AN/NZS CISPR 22:2009+A1:2010
		CLASS A
Safety		
Certifications		CB mark, commercial
		CSA certified (CSA 22.2 #950)
		EN 60950-1: 2006 + A11:2009 + A1:2010 + A12:2011 + A2:2013 IEC 60950-1:2005 (ed.2)+A1:2009+A2:2013
		AN/NZS 60950.1:2015
		CCC (China Compulsory Certificate)
Warranty and Support		
Hardware Limited Warranty		Limited Lifetime*
Technical Support via Phone and Email*		Limited Lifetime*
Limited Lifetime* 24x7 Online Chat		Limited Lifetime*
Technical Support		Limited Lifetime*
Package Contents		
All models		Smart Switch
		Brackets and screws for DIN-Rail mounting, which are already installed in the switch ;
		Rubber protection caps, which are already installed in the SFP sockets
		Installation guide

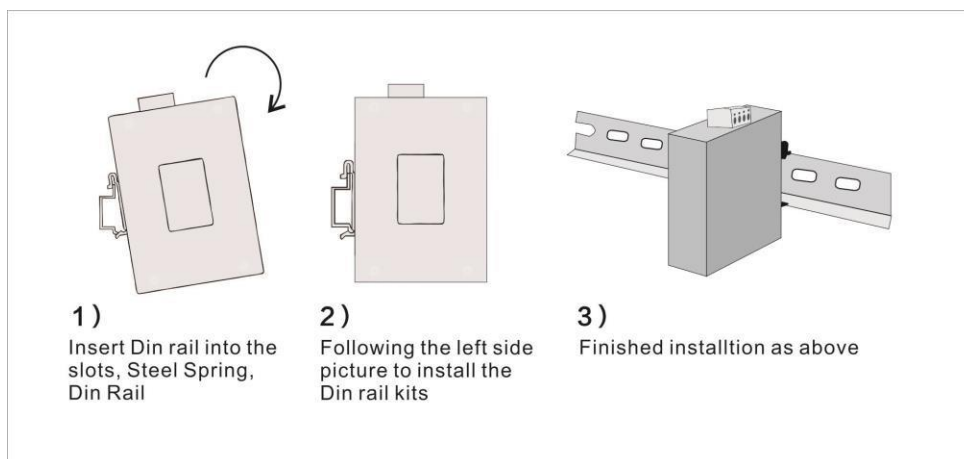
Mechanical Drawing



Applications



Installation Models



Ordering Information

BI8208GM2G4F

8 Ports 10/100/1000Mbps Industrial Managed Switch With 2 Gigabit RJ45 and 4 SFP Uplink, Din-Rail

# 337 Forest Road
London, United Kingdom

+44 7859 571344



Info@bornelectronics.com

<https://bornelectronics.com>