

# BI9208PGM4G4T

8-Port Gigabit Industrial L3 Managed PoE Switch  
With 4-Port 10G SFP+ Uplink

## Datasheet



### Key Features:

**Ports:** Provide 8\*10/100/1000Mbps PoE ports with 4 ports 10/100/1000M RJ45+ 4\*1G/10Gbps SFP+, 1 Console Port

**PoE Standard:** IEEE802.3af/at Power over Ethernet (PoE) Compliant

**Surge protection:** Protect the device from lighting surges and others electrical hazards

**Layer 3 Managed:** Supports IPV4/IPV6 management, static route,RIP, OSPF, security protection mechanisms, complete ACL/QoS policies, and rich VLAN functions. Supports multiple network redundancy protocols STP/RSTP/MSTP (<50ms) and (ITU-T G.8032) ERPS(<20ms) to improve link backup and network reliability

**Industrial Installation:** Din Rail mounting installation

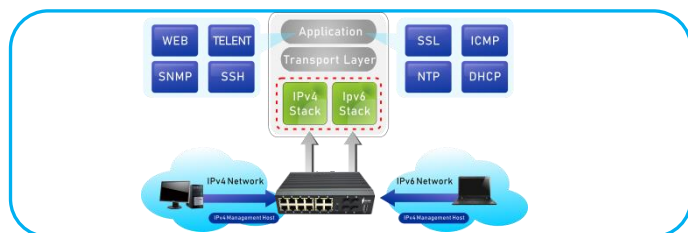
**Wide Application:** Designed for Railway, traffic etc some Industrial environment

**Working Temperature:** -40 to 85 degrees operating temperature

**Considerate Design:** IP40 Industrial design with dual power input

### Environmentally Hardened Design

With the **IP40** metal industrial case which provides a high level of immunity against electromagnetic interference and heavy electrical surges,Being able to operate under the temperature range from **-40 to 85 degrees C**, the BI9208PGM4G4T can be placed in almost any difficult environment.

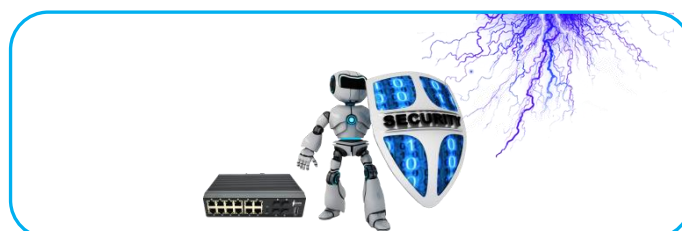


### Cost-effective IPv6 Managed Gigabit PoE Switch Solution

With layer 3 managed Gigabit PoE Switch, It provides IPv6/IPv4 management and built-in L2/L4 Gigabit Switching engine, and supports high-speed transmission of surveillance images and videos.

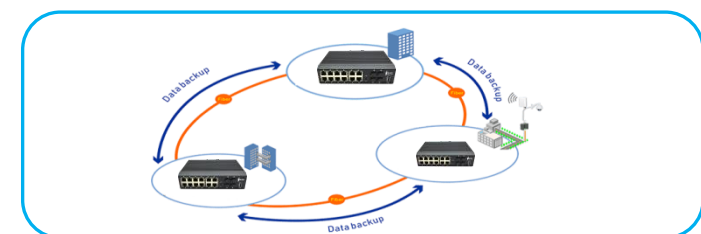
### Surge Protection Design

provides contact discharge of  $\pm 8KV$  DC and air discharge of  $\pm 15KV$  DC for Ethernet ESD protection. It also supports  $\pm 6KV$  surge immunity to improve product stability and protects users' networks from devastating ESD attacks, making sure the flow of operation does not fluctuate.



### Comprehensive reliability mechanisms(ERPS)

Besides STP,RSTP, and MSTP, the BI9208PGM4G4T Managed PoE Switch supports enhanced Ethernet reliability technologies such as Ethernet Ring Protection Switching (ERPS), also referred to as G.8032. ERPS supports various services and allows flexible networking, helping customers build a network with lower OPEX and CAPEX.



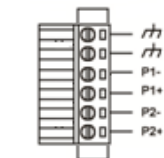
## Technical Datasheet

Model	BI9208PGM4G4T	
Hardware Specifications		
Connector	12* 10/100/1000BASE-T RJ45 auto MDI/MDIX ports	
	4* 1G/10G Base-X SFP+ Slots	1 Console port
PoE Port	8* 10/100/1000Mbps POE PSE port	
LED Display	Power Indicator: PWR(green).Network Indicator: Link(yellow) PoE Working Indicator: PoE(green)	
Thermal Fan	Fanless Design	
Installation	Din Rail	
Switch Architecture	Store and Forward	
Transmission model	IEEE802.3X full-duplex and Backpressure half-duplex	
Switch Performance	Backplane bandwidth	128Gbps
	Packet forwarding rate	72Mpps
	MAC address	16k
Power requirement	DC 48V~54V	
ESD Protection	6KV ESD	
Dimension(WxDxH)	50mm x145mm x 170mm(1.97in x 5.71in x 6.69in)	
Weight	1.3kg	
Power over Ethernet (PoE) Specifications		
Network standard	IEEE802.3i 10 BASE-T	
	IEEE802.3u 100 BASE-TX	
	IEEE802.3ab 1000BASE-T	
	IEEE802.3ae 10ASE-X	
	IEEE802.3x Flow Control	
	IEEE802.3af Power over Ethernet	
	IEEE802.3at Power over Ethernet	
	IEEE802.3az EEE	
PoE Standard	IEEE 802.3af Power over Ethernet/PSE	
	IEEE 802.3at Power over Ethernet Plus/PSE	
PoE Supply Type	1/2(+), 3/6(-) End-span	
PoE Power Output	Per Port 52V DC, 300mA. max. 15.4 watts (IEEE 802.3af)	
	Per Port 52V DC, 600mA. max. 30 watts (IEEE 802.3at)	
PoE Power budget	120/240W optional	
Layer 3 Functions		
Network Management Type	Layer 3	
Layer 3 Features	Support ARP protocol, maximum 1024 pcs	
	Support static route/default route, maximum 128 pcs	
	Support L3 network management function,	
	Support IPV4/IPV6 dual stack management	
	Support L3 routing at full wire-speed forwarding,	
Port Mirroring	Support communication between different network segments and different VLANs	
	TX / RX / both    Many-to-1 monitor	

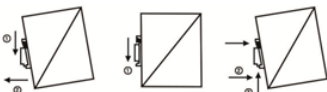
Vlan	802.1Q tagged-based VLAN Up to 256 VLAN groups, out of 4094 VLAN IDs 802.1ad Q-in-Q tunneling Voice VLAN;Protocol VLAN;Private VLAN (Protected port),GVRP
Link Aggregation	IEEE 802.3ad LACP and static trunk Supports 8 groups of 8-port trunk
Spanning Tree Protocol	STP, IEEE 802.1D Spanning Tree Protocol RSTP, IEEE 802.1w Rapid Spanning Tree Protocol MSTP, IEEE 802.1s Multiple Spanning Tree Protocol
Industrial Ring	G.8032 (ERPS),Recovery time less than 20ms 250 Ring at most, Max 1024 devices per ring
IGMP Snooping	IGMP (v2/v3) snooping IGMP querier Up to 256 multicast groups
MLD Snooping	MLD (v1/v2) snooping, up to 256 multicast groups
Access Control List	IPv4/IPv6 IP-based ACL / MAC-based ACL
PoE Management	Open or close port Standard POE scheduling management Power and current display Automatic restarting function of equipment dead machine Timing Support IP bindings restarting
QoS	8 mapping ID to 8 level priority queues --- Port number --- 802.1p priority --- 802.1Q VLAN tag --- DSCP field in IP packet Traffic classification based, strict priority and WRR
Security	IEEE 802.1X port-based authentication Built-in RADIUS client to co-operate with RADIUS server RADIUS / TACACS+ user access authentication IP-MAC port binding; MAC filtering; Static MAC address DHCP Snooping and DHCP Option82; STP BPDU guard, BPDU filtering and BPDU forwarding; DoS attack prevention; ARP inspection; IP source guard
Management Function	
Basic Management Interfaces	Web browser / Telnet / SNMP v1, v2c, V3 Firmware upgrade by HTTP / TFTP protocol through Ethernet network Remote / Local Syslog, System log, LLDP protocol ,SNTP
Secure Management Interfaces	SSH, SSL, SNMP
SNMP MIBs	RFC 1213 MIB-II; RFC 1215 Generic Traps; RFC 1493 Bridge MIB RFC 2674 Bridge MIB Extensions; RFC 2737 Entity MIB (Version 2) RFC 2819 RMON (1, 2, 3, 9); RFC 2863 Interface Group MIB RFC 3635 Ethernet-like MIB
Environment	
Safety	FCC Part15 Class A,CE.RoHs
Environment specification	Operating temperature: -40℃~85℃, operating humidity: 5%~95% Storage temperature: -40℃~85℃, storage humidity: 5%~95%

### Installation Models

#### Power Terminal

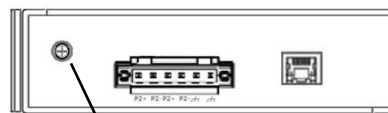


- ◆ 6pin 3.81mm-spacing plug-in terminal
- ◆ 48V-54VDC wide voltage input
- ◆ P1&P2 dual power input
- ◆ Reverse protection



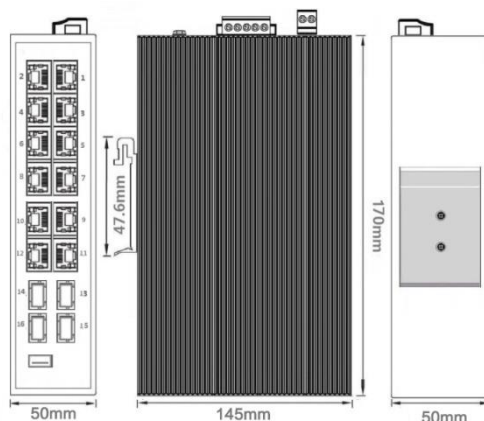
#### Din-Rail

#### Earth Protection

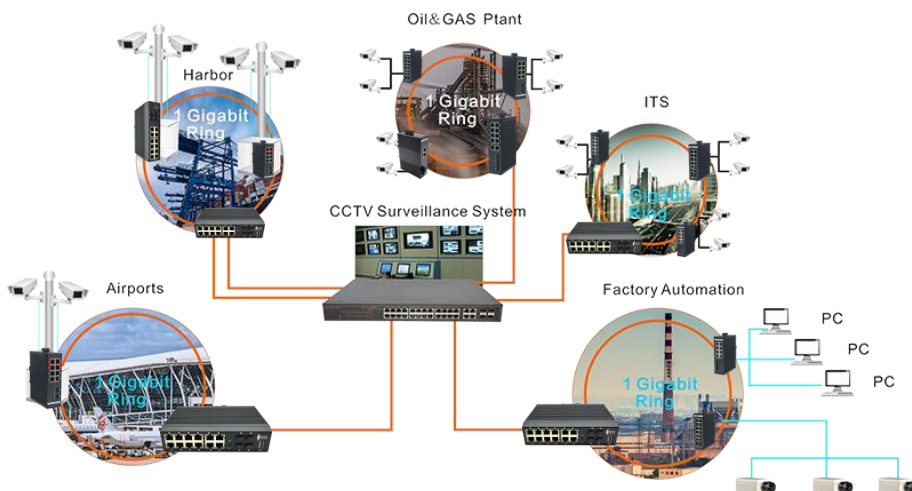


Ground screw

### Mechanical Drawing



### Applications



#### Ordering Information

BI9208PGM4G4T

8Ports 10/100/1000Mbps Industrial Layer 3 Managed PoE switch With 4 ports gigabit RJ45 and 4-1G/10G SFP+, Din rail, IEEE802.3af/at



# 337 Forest Road  
London, United Kingdom



Info@borneelectronics.com



+44 7859 571344



https://borneelectronics.com