

BI6201G1F-MM-500M

2-Port Gigabit Industrial Fiber Converter

Datasheet



Key Features:

- Ports:** Provide 1*10/100/1000Mbps Ethernet ports and 1*1.25Gbps SC
- Self-adaption:** RJ45 port supports 10/100/1000Mbps Auto MDI/MDIX
- Industrial Installation:** Din Rail mounting installation
- Wide Application:** Designed for Railway, traffic etc some Industrial environment
- Surge protection:** Protect the device from lightning surges and others electrical hazards
- Working Temperature:** -40 to 85 degrees operating temperature
- Considerate Design:** IP40 Industrial enclosure
- Easy to use:** Plug and play, No configuration required

Environmentally Hardened Design

With the **IP40** metal industrial case which provides a high level of immunity against electromagnetic interference and heavy electrical surges, Being able to operate under the temperature range from **-40 to 85 degrees C**, the BI6201G1F-MM-500M can be placed in almost any difficult environment.



Dual Power input for High Availability Network

Featuring a strong dual power input system with wide-ranging voltages (12V~36V DC) incorporated into customer's automation network to enhance system reliability and uptime which make the installation more flexible and convenient.

Surge Protection Design

provides contact discharge of $\pm 8\text{KV}$ DC and air discharge of $\pm 15\text{KV}$ DC for Ethernet ESD protection. It also supports $\pm 6\text{KV}$ surge immunity to improve product stability and protects users' networks from devastating ESD attacks, making sure the flow of operation does not fluctuate.



BI6201G1F-MM-500M

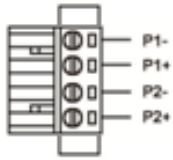
Gigabit Industrial Fiber Converter

Technical Datasheet

Model	BI6201G1F-SM-20KM	
Hardware Specifications		
ports	1*10/100/1000BASE-T RJ45 auto-MDI/MDI-X ports 1*1.25Gbps SC	
Connector	Removable 4-pin terminal block Pin 1/2 for Power 1; Pin 3/4 for Power 2	
LED Display	Power Indicator: PWR(green).Network Indicator: Link(yellow) Fiber: Green	
Power requirements	12~36V DC	
Installation	DIN-rail kit and wall-mount kit	
Switch Performance	Backplane bandwidth	10Gbps
	Packet forwarding rate	2.98Mpps
	MAC address	4k
	Flow control	Back pressure for half duple. IEEE 802.3x pause frame for full duplex
Enclosure	IP40 Metal case	
ESD Protection	6KV ESD	
Dimension(W x D x H)	33 x 86 x 118mm (1.3in x 3.39in x 4.65in)	
Weight	<0.35Kg	
Standards Conformance		
Network standard	IEEE 802.3 10Base-T	
	IEEE 802.3u 100Base-Tx	
	IEEE 802.3ab 1000Base-T	
	IEEE 802.3x Full-Duplex Flow Control	
	IEEE 802.3z 1000Base-X	
Stability Testing	FCC CFR47 Part 15, EN55022/CISPR22, Class A	
	EMS:	
	IEC61000-4-2 (ESD): ±8kV (contact), ±15kV (air)	
	IEC61000-4-3 (RS): 10V/m (80MHz-2GHz)	
	IEC61000-4-4 (EFT): Power Port: ±4kV; Data Port: ±2kV	
	IEC61000-4-5 (Surge): Power Port: ±2kV/DM, ±4kV/CM; Data Port: ±2kV	
	IEC61000-4-6 (CS): 3V (10kHz-150kHz); 10V (150kHz-80MHz)	
	IEC61000-4-16 (Common mode conduction): 30V (cont.), 300V (1s)	
	IEC 60068-2-32 (free fall)	
	IEC 60068-2-27 (shock)	
IEC 60068-2-6 (vibration)		
Environment		
Environment specification	Operating temperature: -40℃~85℃, operating humidity: 5%~95%	
	Storage temperature: -40℃~85℃, storage humidity: 5%~95%	
Warranty	5 Years	

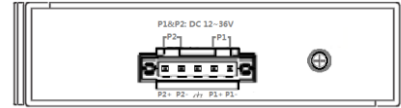
Installation Models

Power Terminal

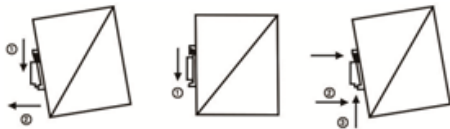


- ◆ 4-pin 3.81mm-spacing plug-in terminal
- ◆ 12V-36VDC wide voltage input
- ◆ P1&P2 dual power input
- ◆ Reverse protection

Earth Protection

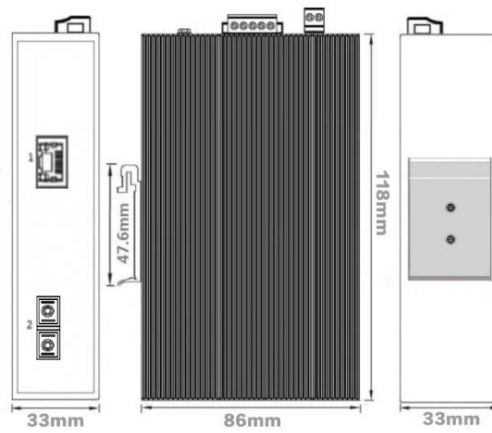


Ground screw

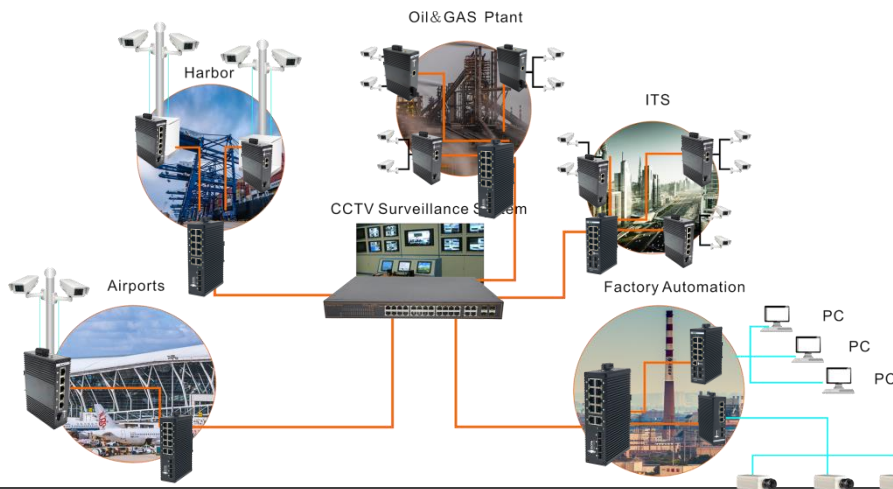


Din-Rail

Mechanical Drawing



Applications



Ordering Information

BI6201G1F-MM-500M

2 Ports 10/100/1000Mbps Industrial Ethernet Fiber converter



337 Forest Road
London, United Kingdom



+44 7859 571344



Info@bornelectronics.com



https://bornelectronics.com