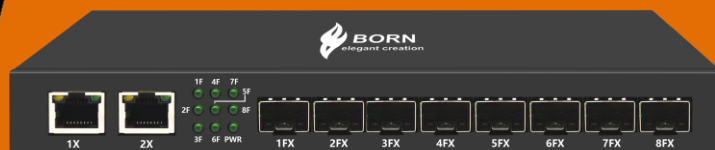


BC2202G8F

8-Port Gigabit Fiber Switch

Datasheet



Key Features:

Ports: Provide 8 *1000M SFP and 2*10/100/1000Mbps Ethernet ports

Self-adaption: RJ45 port supports 10/100/1000Mbps Auto MDI/MDIX

Fiber Port: 1000Mbps SFP Port

Wide Application: Designed for Network Security Solution etc

Surge protection: Protect the device from lighting surges and others electrical hazards

Considerate Design: Rack mounted with fanless design

Easy to use: Plug and play, No configuration required

Gigabit High performance Fiber switch

This 10 Ports gigabit Fiber Switch provides a high-performance switch architecture that is capable of providing the non-blocking switch fabric and wire-speed throughput as high as 32Gbps, which greatly simplifies the tasks of upgrading the LAN for catering to increasing bandwidth demands. Besides, the Flow Control function of the switch enables routers and servers to directly connect to the Switch for fast and reliable data transfer.

All the RJ45 copper interfaces of the BC2202G8F support 10/100/1000Mbps auto-negotiation for optimal speed detection through RJ45 Category 6, 5 or 5e cables. It also supports standard for auto-MDI/MDI-X that can detect the type of connection to any Ethernet device without requiring special straight or crossover cables. With 8 SFP module slot available, the SFP port is ideal for connecting the switch to the network's backbone, providing more than enough bandwidth and stability for ultra high speed data transferring, Beside the SFP can transmitt the date with Max 100Km distance with more economic solution

Surge Protection Design

Reaching 6KV surge protection, the ports owns the capacity to keep the Switch from lightning strikes and other electrical surges, offerina reliable performance even in some harsh environments.

Fanless Design

With its good ventilation design, this switch is able to operate all along without a fan, thus reducing substantial power consumption and creating a noiseless environment. It is definitely the best choice for any working environment without affecting its performance.

BC2202G8F

8-Port 1000M SFP and 2-Port 10/100/1000Mbps Fiber Switch

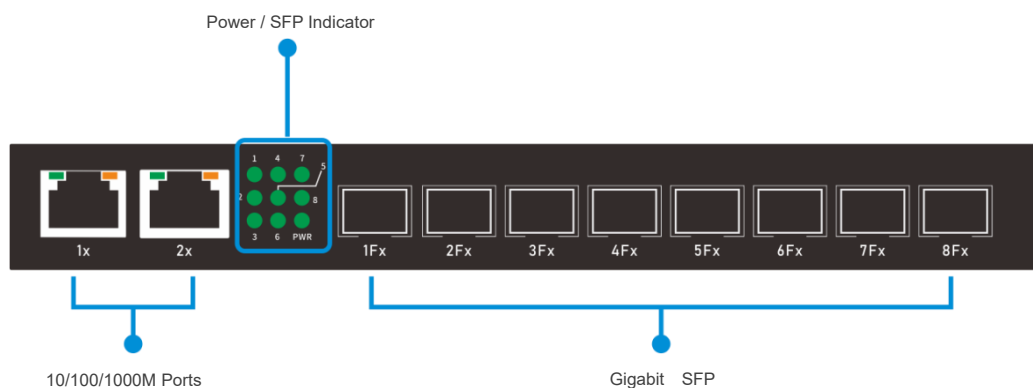
Technical Datasheet

Model	BC2202G8F	
Hardware Specifications		
Connector	8-1000 Base-X SFP Slots	
	2-10/100/1000BASE-T RJ45 auto MDI/MDIX ports	
Processing types	Store and forward	
LED Display	Power Indicator: PWR(green).	
	Network Indicator: Link(green)	
	SFP: Link(green)	
Thermal Fan	Fanless Design	
Network Standard	IEEE802.3i 10 BASE-T	
	IEEE802.3u 100 BASE-TX	
	IEEE802.3ab/z 1000 BASE-TX	
	IEEE802.3x Flow Control	
	IEEE802.3az EEE	
Switch Architecture	Store and Forward	
Transmission model	IEEE802.3X full-duplex and Backpressure half-duplex	
Switch Performance	Backplane bandwidth	32Gbps
	Packet forwarding rate	16.86Mpps
	MAC address	8k
Power requirement	AC100-240V 50/60Hz	
ESD Protection	6KV ESD	
Dimension	217 x 105 x 28mm (W x D x H)	
Weight	0.52kg	
Environment	Operating temperature: -20℃~55℃， operating humidity: 5%~95%	
	Storage temperature: -40℃~75℃， storage humidity: 5%~95%	
Safety	FCC Part15 Class A,CE,RoHs	

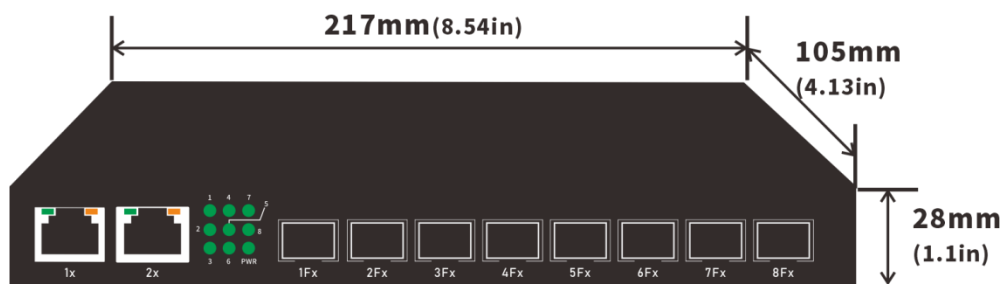
BC2202G8F

8-Port 1000M SFP and 2-Port 10/100/1000Mbps Fiber Switch

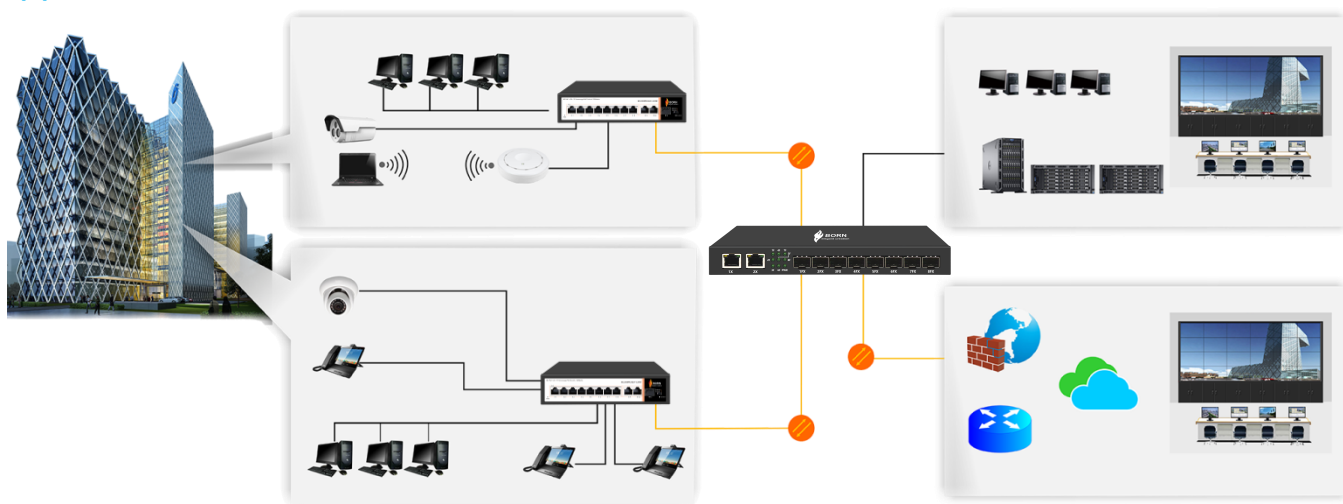
Interfaces



Structure Diagrams



Applications



Ordering Information

BC2202G8F

8-Port 1000M SFP and 2-Port 10/100/1000Mbps Fiber Switch ,6KV surge protection



337 Forest Road
London, United Kingdom



+44 7859 571344



Info@borneelectronics.com



<https://borneelectronics.com>