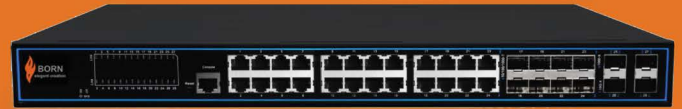


BC224GM8FC4F

28-port Full Gigabit Managed Switch

Datasheet



Ideal for:



Telecom



Hotels & Resorts



Universities



Healthcare



Public Places



Airport



Transport



Industries

FEATURES

- 24 *10/100/1000M ports
- 8*1000M SFP combo ports
- 4*1000M SFP ports
- Support L2 management
- QoS, VLAN, MSTP Management
- Multi-broadcast Management
- Ports management
- 6KV surge protection
- 6KV contact protection
- 8KV air ESD protection
- Support temperature -10°C~50°C
- Supports wall hanging
- Supports desktop installation

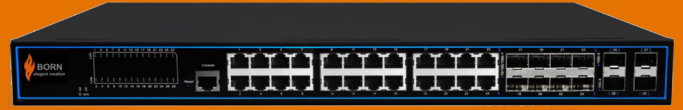
Overview

The BC224GM8FC4F is a 28-port, full gigabit managed switch that uses as an optical fiber link aggregation switch,- supports up to 24 *10/100/1000M ports,8*1000M SFP combo ports, and 4*1000M SFP ports.It supports L2 management, such as QoS, VLAN, MSTP, Multi-broadcast and ports management.It supports wall hanging and desktop installation, reliable and durable, and can be used in security network video monitoring, network engineering and other occasions.

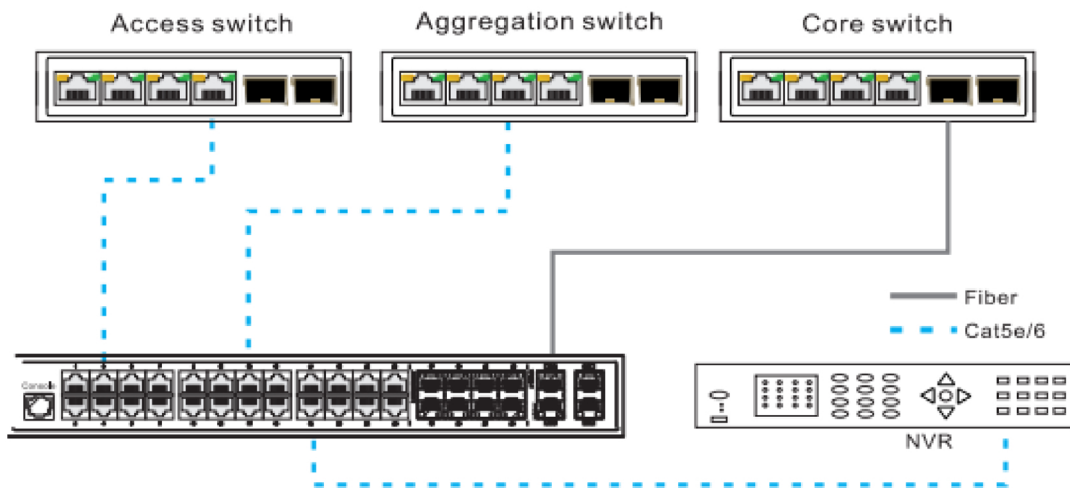
Parameter	Specifications
Power supply	AC power supply
Range of voltage	AC100-240V, 50/60Hz
Consumption	Self-consumption<20W.
Downlink ports	Ports 1~24: 10/100/1000Base-T RJ45, 8*1000Base SFP combo ports
Uplink ports	Ports 25~28: 4*1000Base SFP slots
Console port	RJ45 to serial port (38400,8,N,1)
Reset key	Short press>5s, recovery to default
Cable and distance	Use cat5e/6,100m
Standard	IEEE802.3, IEEE802.3u, IEEE802.3z
Switch fabric	56 Gbps
Through put	41.6Mpps
Buffer	4M
MAC address table	16K
Indicator	Power: 1 *red ; Uplink25~28: Green LEDs indicate Link/Act Downlink 1~24: On RJ45 green LEDs indicate Link/Act
Protection	Surge: 6KV, standard: IEC61000-4-5 ESD: 6KV: contact / 8KV: air, standard:IEC61000-4-2
Working temperature	-10°C~50°C
Storage temperature	-40°C~85°C
Humidity	0~95%(No condensation)
Dimension(L×W×H)	420mm×285mm×44mm
Material	Metal
Colour	Black
Net-weight	4kg

BC224GM8FC4F

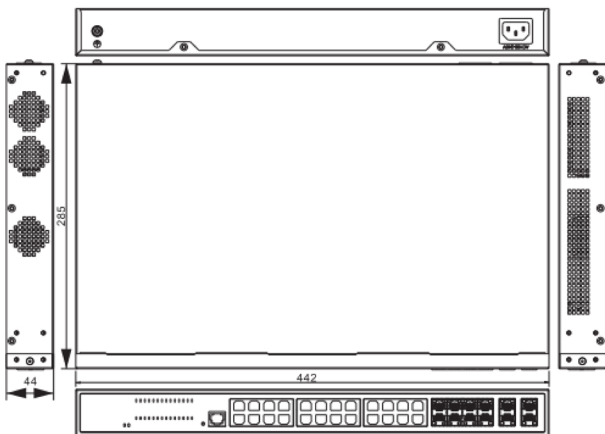
28-port Full Gigabit Managed Switch Datasheet



APPLICATION

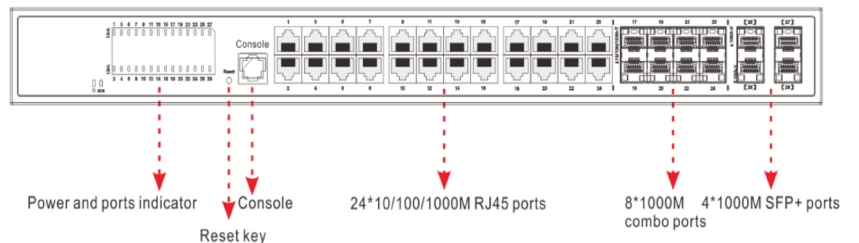


DIMENSION

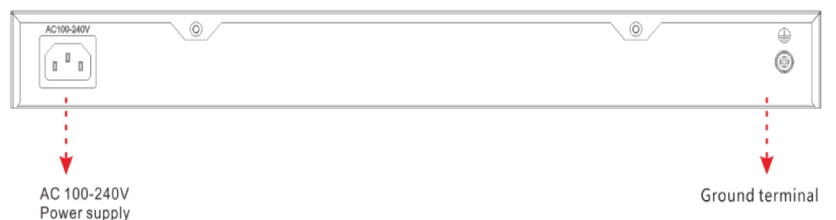


PANEL DIAGRAM

● Front panel



● Back panel



⚠ Attention 1: This product must be well grounded against lightning, please use better than 20# cable to connect the grounding terminal and ground.